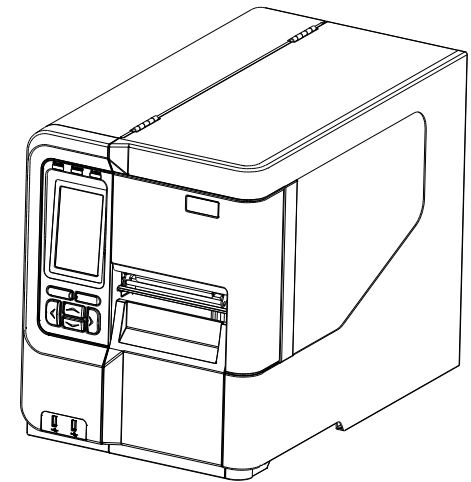


***MX240P/ MX340P/ MX640P Series***

**THERMAL TRANSFER / DIRECT THERMAL BAR CODE PRINTER**

**Parts List**

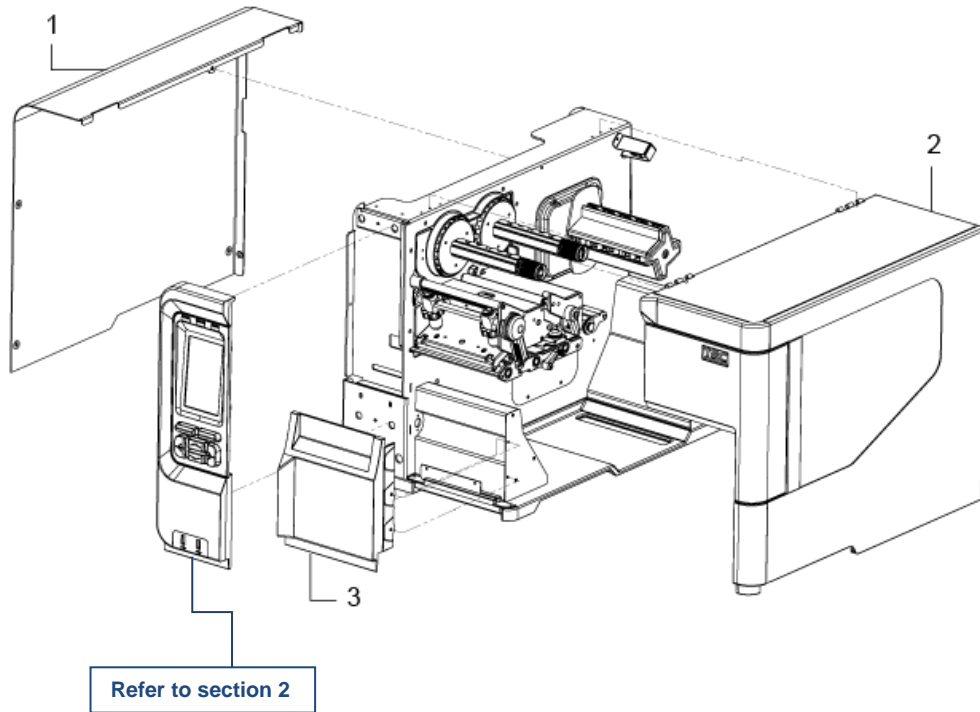


# TABLE OF CONTENT

- Part List ..... 3**
- 1 Printer Cover Assemblies ..... 3**
- 2 LCD Panel Assembly ..... 4**
- 3 Left Side Assemblies ..... 5**
- 4 Right Side Assemblies ..... 6**
- 5 Option and Accessories ..... 7**
- Update History ..... 8**

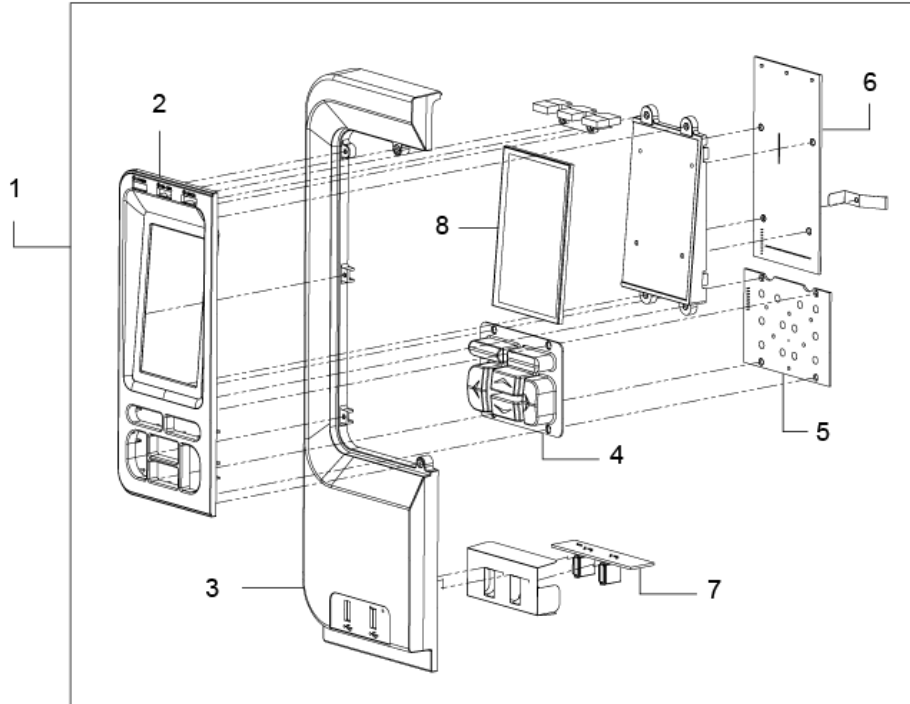
# Part List

## 1 Printer Cover Assemblies



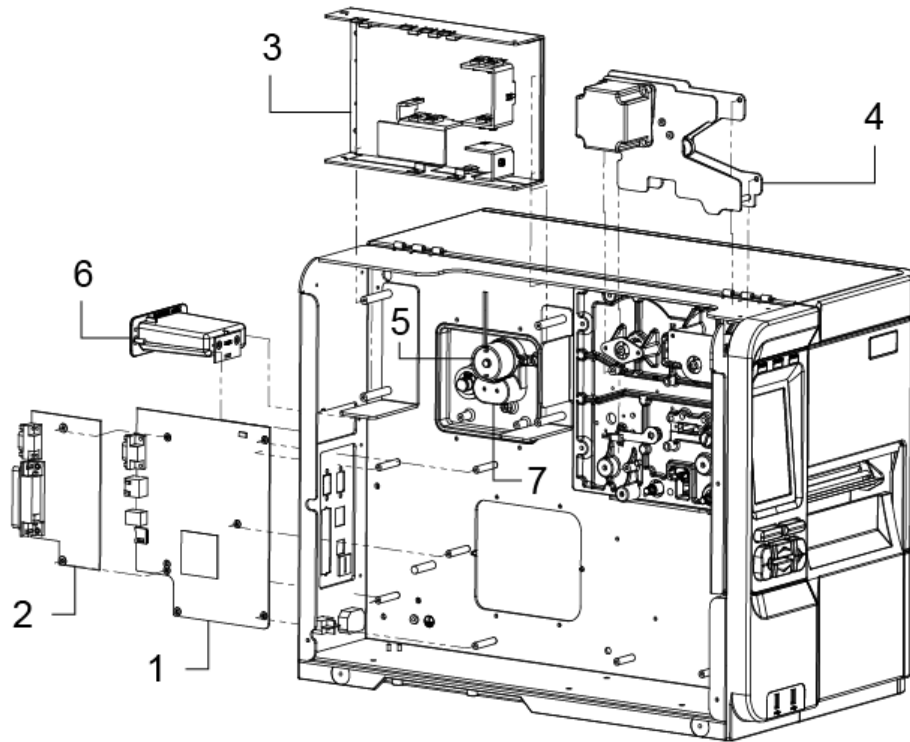
No.	Part No.	Description	Remark	Spare parts
1	32-0510022-00LF	Electronic cover	1 pc	
2	98-0510041-00LF	Media cover assembly	1 set	
3	98-0510040-00LF	Lower front cover assembly	1 set	1%

## 2 LCD Panel Assembly



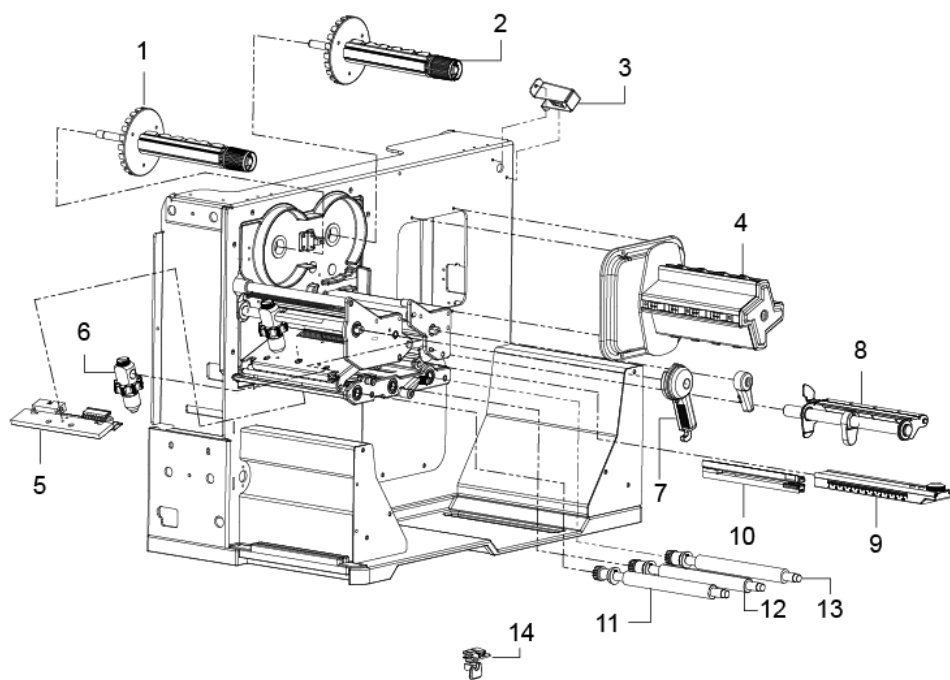
No.	Part No.	Description	Remark	Spare parts
1	98-0510085-00LF	LCD panel assembly	1 set	2%
2	30-0510066-00LF	LCD cover	1 pc	1%
3	30-0510027-20LF	LCD panel cover	1 pc	1%
4	36-0510024-10LF	Keypad	1 pc	
5	98-0510081-00LF	Keypad PCB assembly	1 pc	1%
6	98-0510048-20LF	LCD panel board assembly	1 set	3%
7	98-0510049-10LF	USB host PCB assembly	1 set	
8	66-TH04348-00LF	4.3" LCD	1 set	

### 3 Left Side Assemblies



No.	Part No.	Description	Remark	Spare parts
1	98-0600060-40LF	Main board assembly	1 set	3%
2	98-0510055-00LF	GPIO interface assembly (including parallel port)	1 set Option	1%
3	62-0600245-00LF	Power supply	1 set	2%
4	98-0510034-00LF	Stepping motor assembly (including belt, gears, stepping motor)	1 set	2%
5	65-0510001-00LF	Label spindle DC motor	1 pc	2%
6	98-0510091-10LF	Slot-in Wi-Fi housing with transfer board	1 set	
7	30-0510012-10LF	Gear cover for label spindle	1 pc	

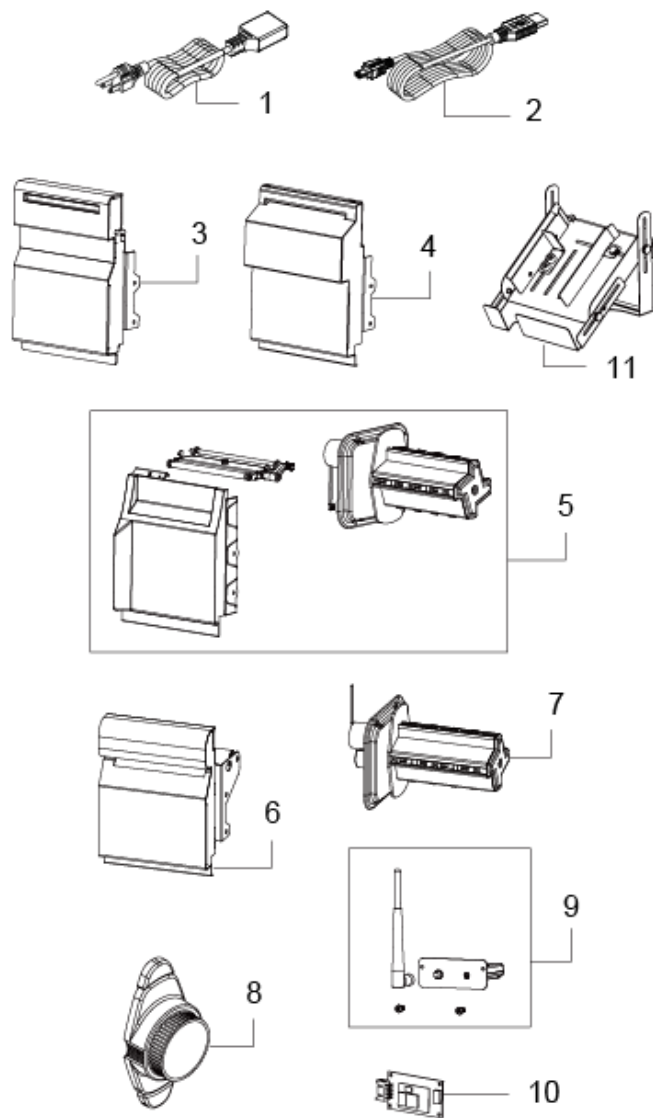
## 4 Right Side Assemblies



N/S : Not shown

No.	Part No.	Description	Remark	Spare parts
1	98-0510031-00LF	Ribbon rewind spindle assembly	1 set	1%
2	98-0510069-00LF	Ribbon supply spindle assembly	1 set	1%
3	98-0510084-00LF	Media near end sensor	1 set	3%
4	98-0510039-00LF	Label spindle assembly	1 set	
5	98-0510090-00LF	203 DPI TPH assembly	1 set	5%
	98-0510090-01LF	300 DPI TPH assembly		5%
	98-0510090-02LF	600 DPI TPH assembly		5%
N/S	72-0510008-10LF	TPH harness	1 pc	1%
6	98-0510025-00LF	Pressure mechanism assembly	2 set	1%
7	98-0510026-00LF	Print head release lever assembly	1 set	1%
8	98-0510072-00LF	Media damper assembly	1 set	
9	98-0510019-00LF	Media sensor adjustment mechanism assembly	1 set	2%
10	98-0510020-30LF	Media type sensor assembly	1 set	3%
11	98-0510010-00LF	Paper feed platen roller assembly	1 set	1%
12	98-0510016-00LF	Peel-off roller assembly	1 set	1%
13	98-0510017-00LF	Rear pressing paper roller	1 set	1%
14	98-0510009-00LF	Paper guide (right/ green)	1 set	

## 5 Option and Accessories



N/S : Not shown

No.	Part No.	Description	Remark	Spare parts
1	72-0180100-00LF	Power cord / US	Standard	
	72-0180100-01LF	Power cord / EU 90 degree	Option	
	72-0180100-02LF	Power cord / UK	Option	
	72-0180100-03LF	Power cord / AU	Option	
	72-0180100-14LF	Power cord / JP	Option	
	72-0180100-05LF	Power cord / CH	Option	
	72-0180100-0DLF	Power cord / CN	Option	
	72-0180100-09LF	Power cord / BR	Option	
	72-0180100-0GLF	Power cord / KR	Option	
	72-0180100-0MLF	Power cord / TW	Option	
	72-0180100-0LLF	Power cord / TW (second source)	Option	
	72-0180100-0PLF	Power cord / RU	Option	
2	72-0010030-00LF	USB cable	1 pc	
3	98-0510056-10LF	Guillotine cutter module (Option)	1 set	1%
4	98-0510099-10LF	Heavy Duty Guillotine Cutter Module (Option)	1 set	
5	98-0510060-10LF	Peel-off kit (Option)	1 set	1%
6	98-0510075-00LF	Internal rewinding front cover assembly (Option)	1 set	
7	98-0510061-00LF	Internal rewinding spindle assembly (Option)	1 set	
8	98-0510082-00LF	Media fixing tab	1 pc	
9	98-0510095-10LF	Slot-in Wi-Fi module (Option)	1 set	1%
10	98-0510102-00LF	Internal Bluetooth module (Option)	1 set	
11	98-0600084-00LF	Universal cutter catch tray (Full set)	Option	
N/S	98-0T80022-00LF	Cleaning pen (MOQ 12pcs/CTN)	Option	

# Update History

Date	Content	Editor
2016/8/24	Modify keypad P/N from 36-0510024-00LF(black) to 36-0510024-10LF(grey)	Camille
2016/8/24	Modify main board assembly P/N from 98-0600060-10LF to 98-0600060-20LF	Camille
2016/10/19	Modify media type sensor assembly P/N from 98-0510020-00LF to 98-0510020-10LF	Camille
2017/1/11	* Remove rotary cutter module P/N * Add heavy duty guillotine cutter module P/N * Add internal Bluetooth module P/N * Add label guide P/N	Camille
2017/1/18	Modify TPH harness P/N from 98-0510008-00LF to 98-0510008-10LF	Camille
2017/4/6	* Modify guillotine cutter module P/N from 98-0510056-00LF to 98-0510056-10LF * Modify heavy duty guillotine cutter module P/N from 98-0510099-00LF to 98-0510099-10LF	Camille
2017/5/25	Modify main board assembly P/N from 98-0600060-20LF to 98-0600060-30LF	Camille
2017/8/1	Remove heavy duty guillotine cutter module P/N 98-0510099-10LF	Camille
2017/9/4	Add Cleaning pen P/N	Kate
2017/9/28	Revise Peel-off kit (Option) P/N from 98-0510060-00LF to 98-0510060-10LF	Kate
2017/11/10	Revise Power cord / CN P/N from 72-0180100-08F to 72-0180100-0DLF Add Power cord / TW P/N Add Power cord / TW (second source) P/N	Kate
2017/11/29	Add gear cover P/N (for label spindle)	Camille
2018/1/3	Revise Main board assembly P/N from 98-0600060-30LF to 98-0600060-40LF	Kate
2018/3/8	Revise Cleaning pen (MOQ 12PCS/CTN) P/N from 36-0000100-00LF to 98-0T80022-00LF	Kate
2018/7/6	Add Power cord / RU P/N	Kate
2018/7/24	Revise Media type sensor assembly P/N from 98-0510020-10LF to 98-0510020-20LF	Kate
2018/10/26	Add Heavy Duty Guillotine Cutter Module P/N	Kate
2018/11/7	Revise Power supply P/N from 62-0600243-00LF to 62-0600245-00LF	Kate
2018/12/5	Revise Media type sensor assembly P/N from 98-0510020-20LF to 98-	Kate



	0510020-30LF	
2020/4/28	Add Universal cutter catch tray P/N	Camille
2020/6/8	Modify the P/N for Slot-in Wi-Fi housing with transfer board from 98-0510091-00LF to 98-0510091-10LF	Camille
2021/7/2	Modify the P/N of 4.3" LCD from 66-043TN24-00LF to 66-TH04348-00LF	Linda
2021/8/2	Modify 98-0510095-00LF, Slot-in Wi-Fi module to 98-0510095-10LF, Slot-in Wi-Fi module.	Linda



TSC Auto ID Technology Co., Ltd.

Corporate Headquarters

9F., No.95, Minquan Rd., Xindian Dist.,  
New Taipei City 23141, Taiwan (R.O.C.)

TEL: +886-2-2218-6789

FAX: +886-2-2218-5678

Web site: [www.tscprinters.com](http://www.tscprinters.com)

E-mail: [apac\\_sales@tscprinters.com](mailto:apac_sales@tscprinters.com)  
[tech\\_support@tscprinters.com](mailto:tech_support@tscprinters.com)

Li Ze Plant

No.35, Sec. 2, Ligong 1st Rd., Wujie Township,  
Yilan County 26841, Taiwan (R.O.C.)

TEL: +886-3-990-6677

FAX: +886-3-990-5577