

Alpha-3R

Direct Thermal

Mobile Barcode Printers



Series Lists:

Alpha-3R

Service Manual

Copyright Information

©2021 TSC Auto ID Technology Co., Ltd.

The copyright in this manual, the software and firmware in the printer described are owned by TSC Auto ID Technology Co., Ltd. All rights reserved.

CG Triumvirate is a trademark of Agfa Corporation. CG Triumvirate Bold Condensed font is under license from the Monotype Corporation. Windows is a registered trademark of Microsoft Corporation.

All other trademarks are the property of their respective owners. Information in this document is subject to change without notice and does not represent a commitment on the part of TSC Auto ID Technology Co. No part of this manual may be reproduced or transmitted in any form or by any means, for any purpose other than the purchaser's personal use, without the expressed written permission of TSC Auto ID Technology Co.



Table of Content

1. Fundamental of the System.....	1
1.1 Printer Overview	1
Front View	1
Interior View	2
Rear View	3
2. Electronics.....	4
2.1 Summary of the Board Connectors	4
3. Mechanism.....	8
3.1 Replacing the Planten Roller.....	8
3.2 Replacing the Keys Control Board	9
3.3 Replacing the Bluetooth Module (Option).....	10
3.4 Replacing the Keys Control Board	11
3.5 Replacing the Main Board Assembly.....	13
3.6 Replacing the Print Mechanism.....	14
3.7 Replacing the Stepping Motor	15
3.8 Replacing the Stepping Motor	16
3.9 Replacing the Wi-Fi Mudule	17
3.10 Replacing the Open Sensor	18
4. TroubleShooting	20
5. Maintenance.....	22



1. Fundamental of the System

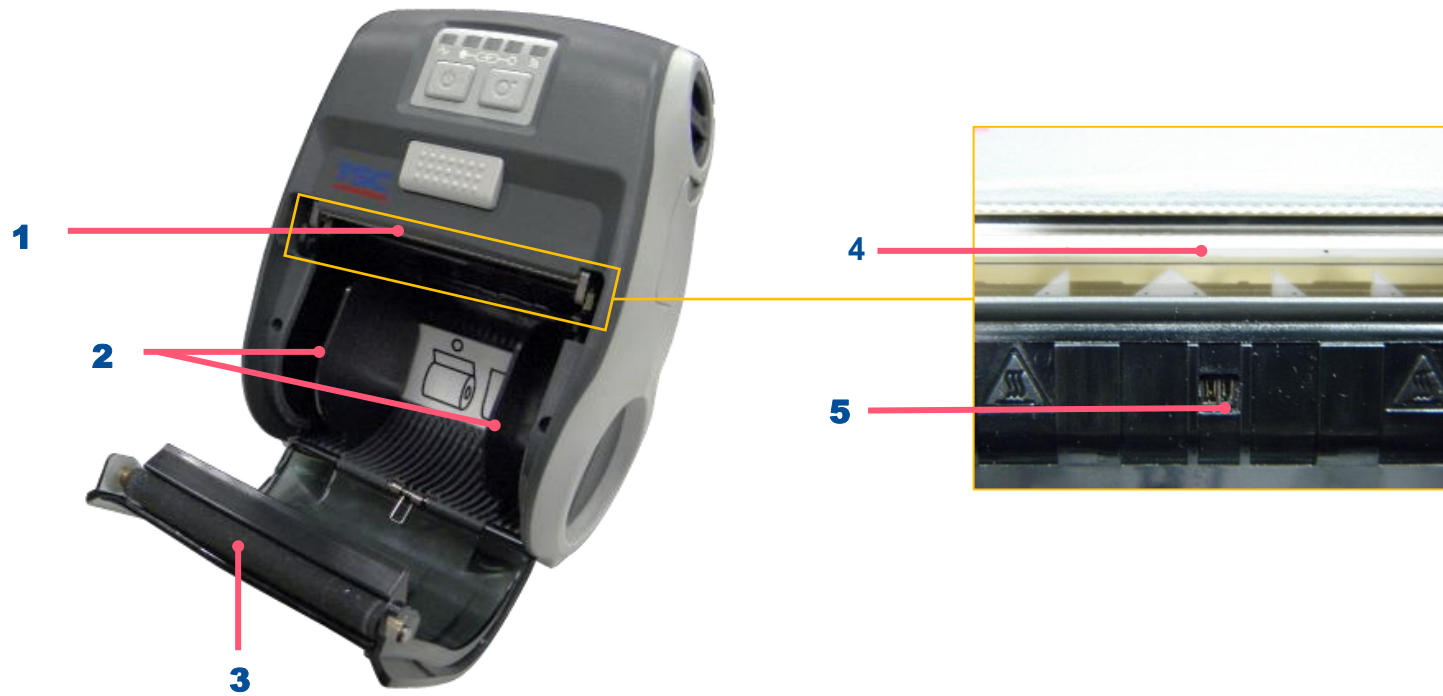
1.1 Printer Overview

Front View



1. LED indicator
2. Power on/off button
3. Media holder adjustment knob
4. Feed button
5. Media cover release button
6. Media cover

Interior View



1. Tear edge
2. Media holder
3. Platen roller
4. Print head
5. Black mark sensor

Rear View

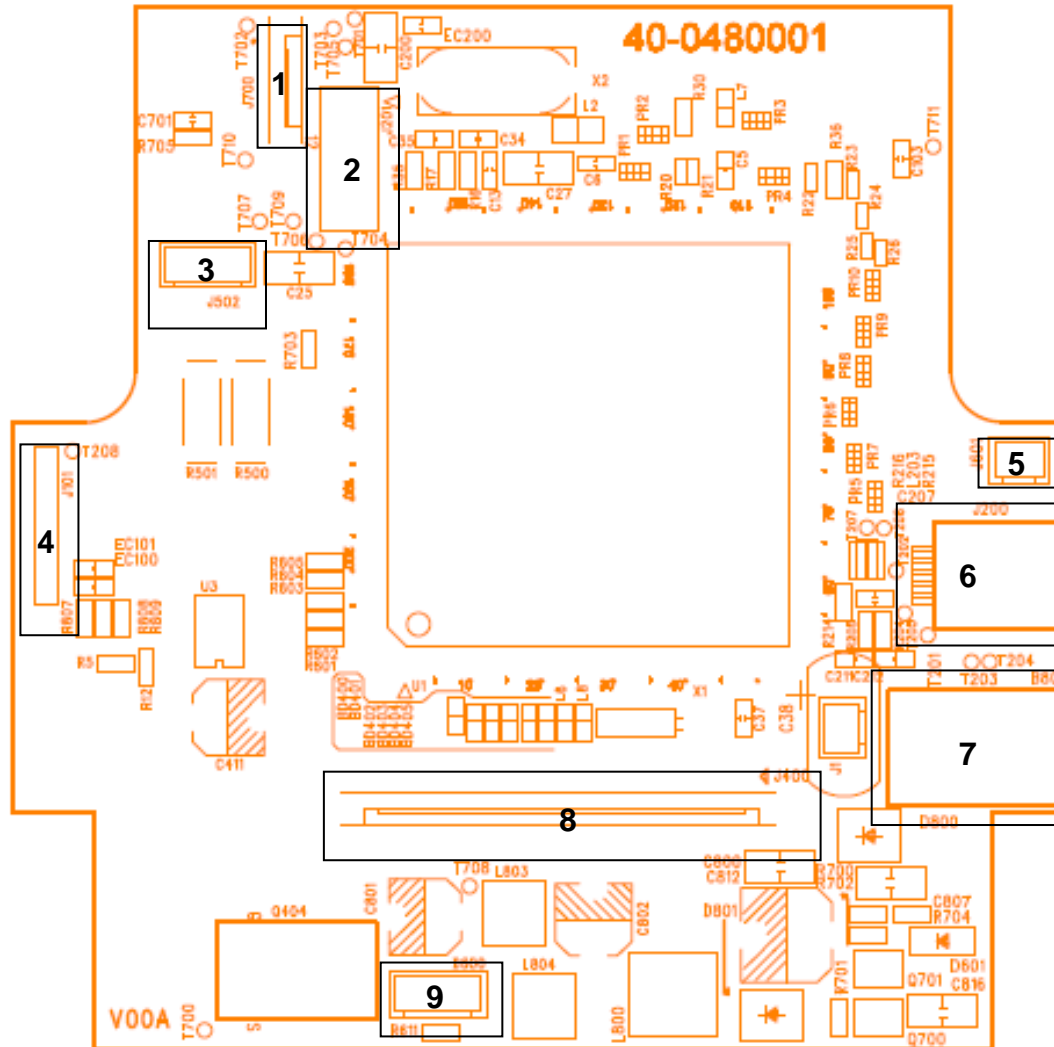


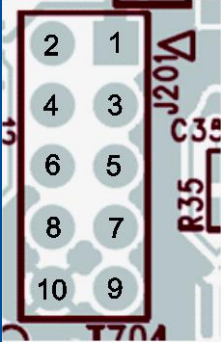
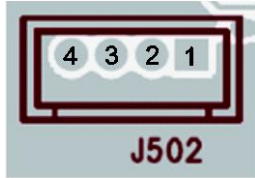
- 1.** Li-ion Battery
- 2.** Battery open clasp
- 3.** USB interface
- 4.** Power jack
- 5.** Interface cover

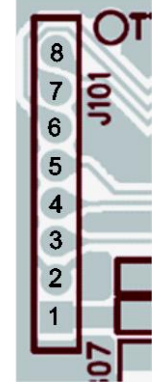

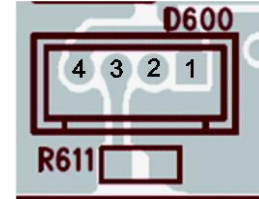
2. Electronics

2.1 Summary of the Board Connectors

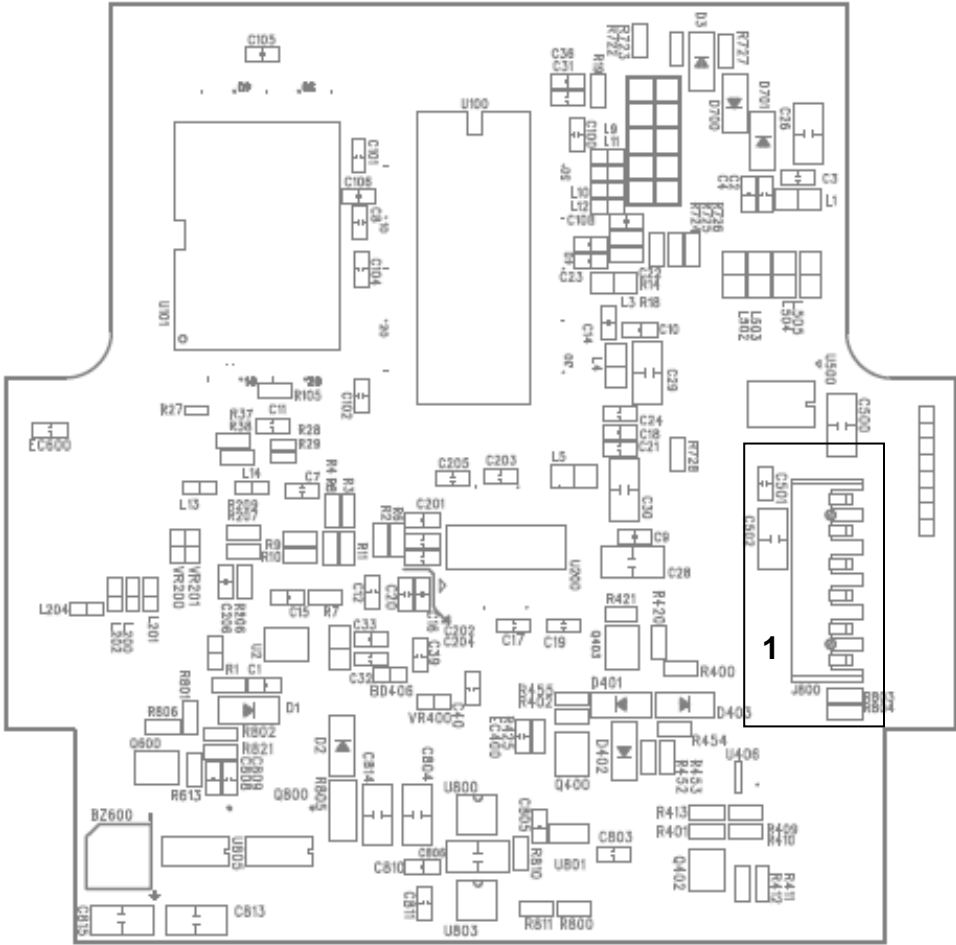
Main board top



Connector	Description																							
1	LED & KEY board																							
2	WiFi or Bluetooth module connector																							
		<table border="1"> <thead> <tr> <th>Pin</th> <th>Description</th> </tr> </thead> <tbody> <tr> <td>1</td> <td>3.3V</td> </tr> <tr> <td>2</td> <td>BT/WiFi Reset</td> </tr> <tr> <td>3</td> <td>BT RXD</td> </tr> <tr> <td>4</td> <td>BT RTS</td> </tr> <tr> <td>5</td> <td>BT TXD</td> </tr> <tr> <td>6</td> <td>BT CTS</td> </tr> <tr> <td>7</td> <td>WiFi wake up</td> </tr> <tr> <td>8</td> <td>WiFi TCP</td> </tr> <tr> <td>9</td> <td>BT/WiFi Switch</td> </tr> <tr> <td>10</td> <td>GND</td> </tr> </tbody> </table>	Pin	Description	1	3.3V	2	BT/WiFi Reset	3	BT RXD	4	BT RTS	5	BT TXD	6	BT CTS	7	WiFi wake up	8	WiFi TCP	9	BT/WiFi Switch	10	GND
Pin	Description																							
1	3.3V																							
2	BT/WiFi Reset																							
3	BT RXD																							
4	BT RTS																							
5	BT TXD																							
6	BT CTS																							
7	WiFi wake up																							
8	WiFi TCP																							
9	BT/WiFi Switch																							
10	GND																							
3	Stepping motor																							
		<table border="1"> <thead> <tr> <th>Pin</th> <th>Description</th> </tr> </thead> <tbody> <tr> <td>1</td> <td>OUT1</td> </tr> <tr> <td>2</td> <td>OUT2</td> </tr> <tr> <td>3</td> <td>OUT1</td> </tr> <tr> <td>4</td> <td>OUT2</td> </tr> </tbody> </table>	Pin	Description	1	OUT1	2	OUT2	3	OUT1	4	OUT2												
Pin	Description																							
1	OUT1																							
2	OUT2																							
3	OUT1																							
4	OUT2																							
4	Download F/W connector																							

			Pin	Description
			1	3.3V
			2	GND
			3	RESET
			4	BMS
			5	NPCS0
			6	MOSI
			7	MISO
			8	SPCK
5	Head open sensor		Pin	Description
			1	HEAD
			2	GND
6	USB & RS 232 connector			
7	12V DC IN			
8	TPH connector			
9	Paper sensor		Pin	Description
			1	3.3V
			2	BM_E
			3	BM_R
			4	3.3V

Main board bottom



Connector	Description
1	Battery connector

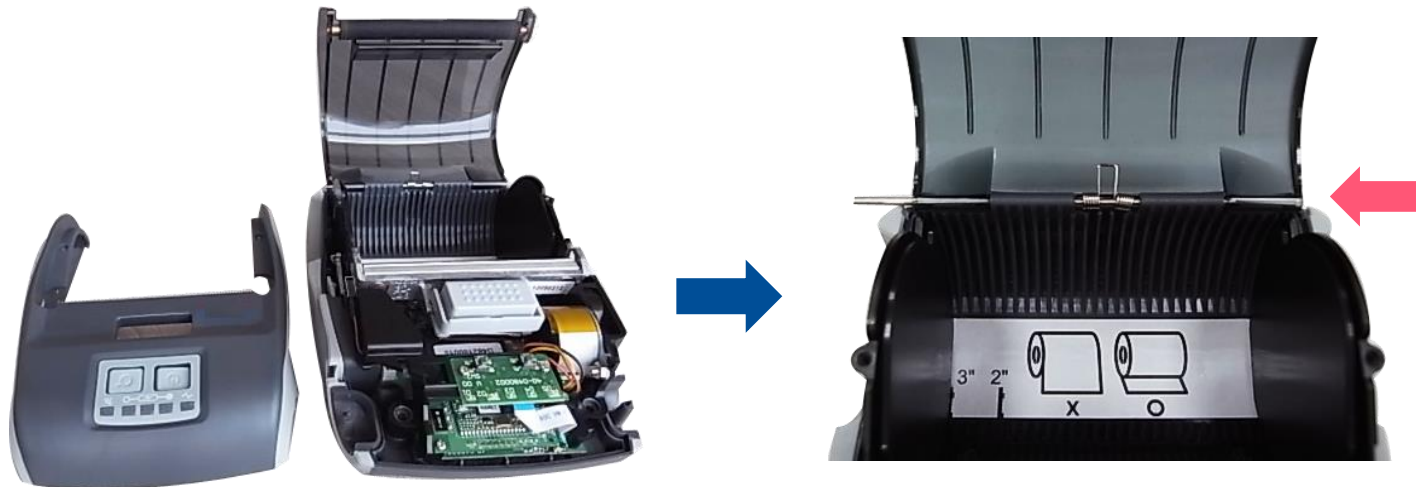
3. Mechanism

3.1 Replacing the Platen Roller

1. Remove 2 screws from the back of the printer and two screws from the front of the printer.



2. Take the printer top cover off. Use a tool to remove the shaft. Remove/Replace the media cover. (including the platen roller ass'y)



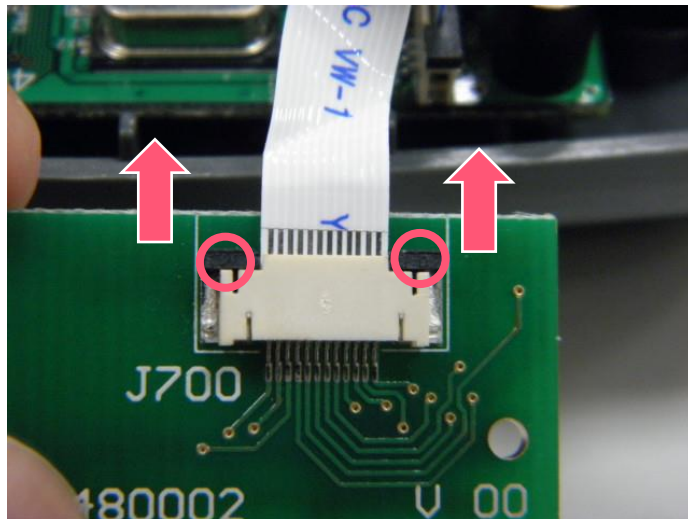
3. Reassemble the parts in the reverse procedures.

3.2 Replacing the Keys Control Board

1. Refer to section 3.1 to remove the printer top cover.
2. Remove two screws on the keys control board.



3. Loosen the connector lock then disconnect the flat cable from the keys control board. Remove/Replace the keys control board.



4. Reassemble the parts in the reverse procedures.

3.3 Replacing the Bluetooth Module (Option)

1. Refer to section 3.2 to remove the keys control board.
2. Remove two screws on the Bluetooth control board.



3. Disconnect the connector on the board.



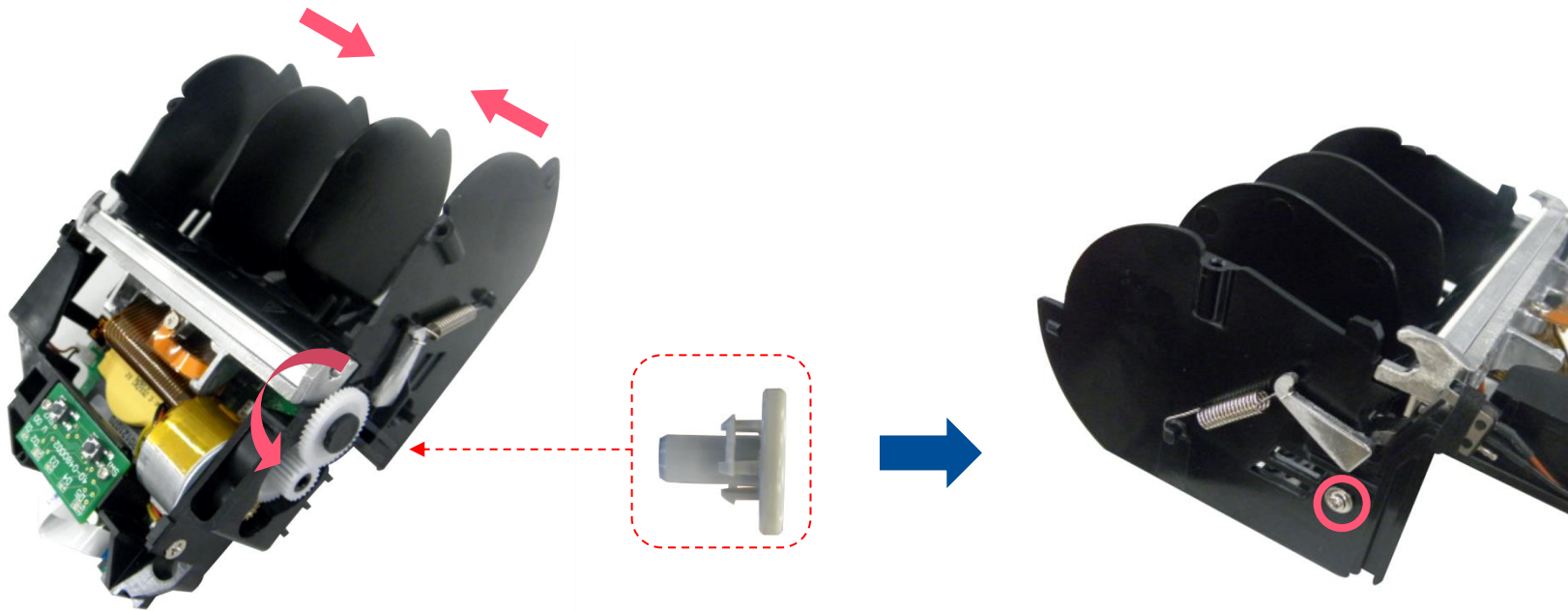
4. Reassemble the parts in the reverse procedures.

3.4 Replacing the Keys Control Board

1. Remove two screws and media holder adjustment knob.



2. Take the interior mechanism from the printer bottom cover.
3. Plug the media holder adjustment knob to rotate the media holder to the closest position and remove a screw on the other side.



4. Take the media holder assembly from the mechanism.



5. Reassemble the parts in the reverse procedures.

3.5 Replacing the Main Board Assembly

1. Refer to section 3.2 to section 3.4 to remove key control board, Bluetooth control board (option), and the media holder assembly.
2. Remove two screws from the back of interior mechanism and disconnect all the connectors on the main board assembly.



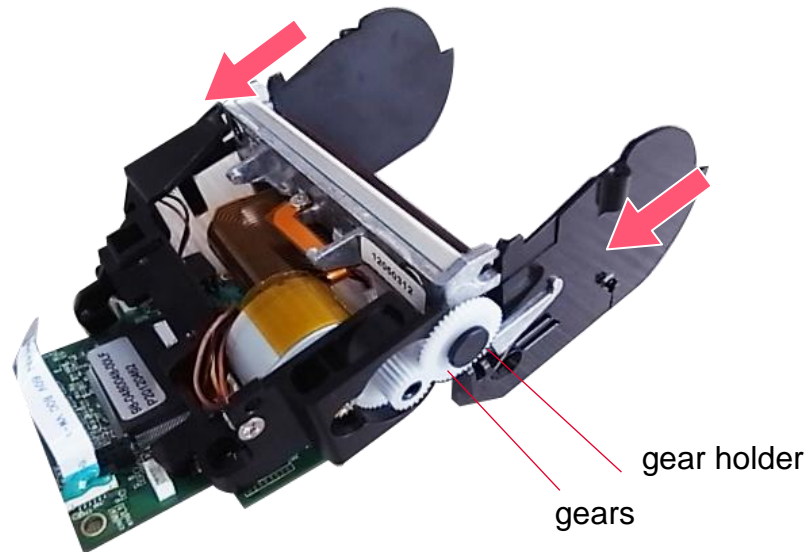
3. Reassemble the parts in the reverse procedures.

3.6 Replacing the Print Mechanism

1. Refer to section 3.2 to section 3.5 to remove key control board, Bluetooth control board (option), the media holder assembly, and main board assembly.
2. Use the long-nose pliers to remove two spring torsions on each side.



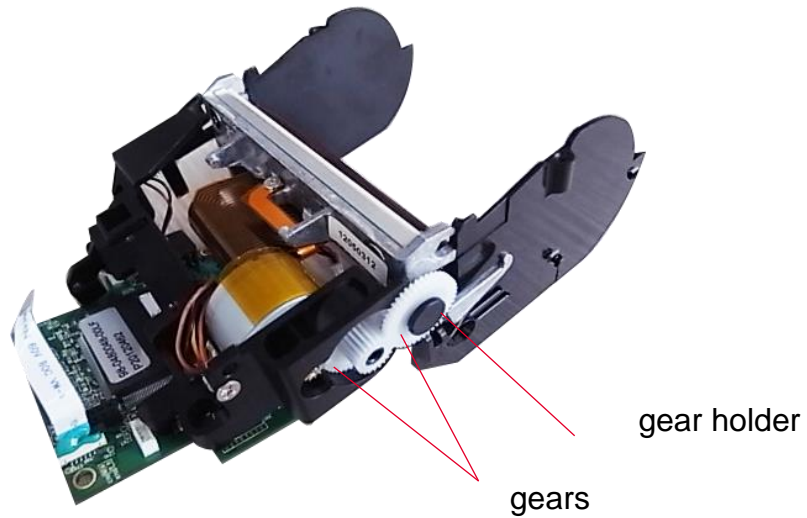
3. Take the gear holder and the gear, and push the print head holder on each side to remove the print head assembly.



4. Reassemble the parts in the reverse procedures.

3.7 Replacing the Stepping Motor

1. Refer to section 3.4 and section 3.5 to remove media holder assembly and main board assembly.
2. Remove the gear holder and two gears.



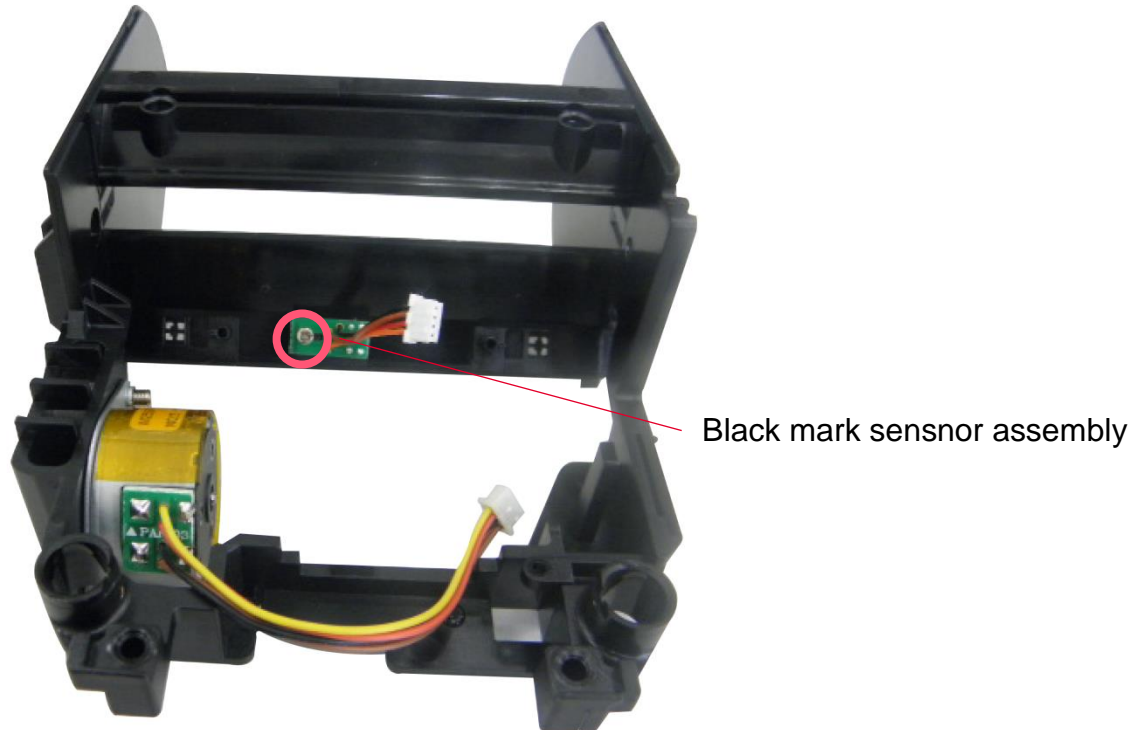
3. Remove two screws.



4. Reassemble the parts in the reverse procedures.

3.8 Replacing the Stepping Motor

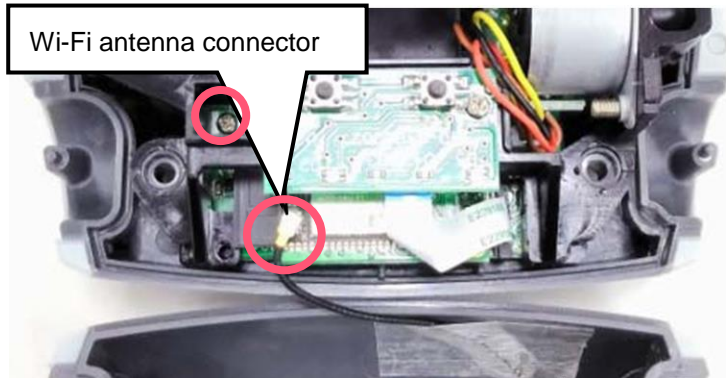
1. Refer to section 3.2 to section 3.5 to remove key control board, Bluetooth control board (option), the media holder assembly, and main board assembly.
2. Remove the screw and replace the black mark sensor.



3. Reassemble the parts in the reverse procedures.

3.9 Replacing the Wi-Fi Module

1. Refer to section 3.1 take the printer top cover off. Disconnect the Wi-Fi antenna connector carefully.



2. Refer to section 3.2 to remove the keys control board.
3. Remove one screw on the Wi-Fi control board. Please refer to above picture.
4. Replace the WiFi control board.
5. Reassemble the parts in the reverse procedures.

Note:

- This is the new Wi-Fi module’s replacing instruction. It should work with the main board that is -30LF version. (or later version)
- If you replace the main board, please check the Wi-Fi signal band on configuration page for your using region. If any questions, please contact the Customer Service Department of your purchased reseller or distributor for assistance.

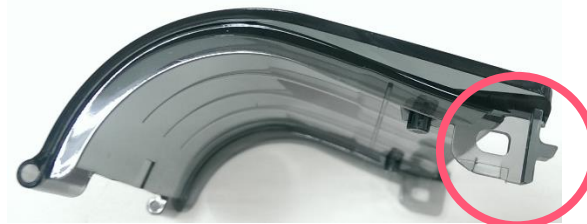
US	EUR
<pre> ***** WIFI VERSION: 1.3.1e WIFI MAC ADDRESS: 00-23-A7-65-19-30 WIFI Region: US WIFI MODE: INFRASTRUCTURE WIFI SSID: RD_AP24 WIFI DHCP ENABLED: YES WIFI IP ADDRESS: 0.0.0.0 WIFI SUBNET MASK: 0.0.0.0 WIFI DEFAULT GATEWAY: 0.0.0.0 WIFI PRINTER NAME: PS-651930 WIFI RAW PORT: 9100 ***** </pre>	<pre> ***** WIFI VERSION: 1.3.1e WIFI MAC ADDRESS: 00-23-A7-65-19-30 WIFI Region: EUR WIFI MODE: INFRASTRUCTURE WIFI SSID: RD_AP24 WIFI DHCP ENABLED: YES WIFI IP ADDRESS: 0.0.0.0 WIFI SUBNET MASK: 0.0.0.0 WIFI DEFAULT GATEWAY: 0.0.0.0 WIFI PRINTER NAME: PS-651930 WIFI RAW PORT: 9100 ***** </pre>

3.10 Replacing the Open Sensor

1. Please refer to section 3.1 take the printer top cover off and replace a new one with platen roller.



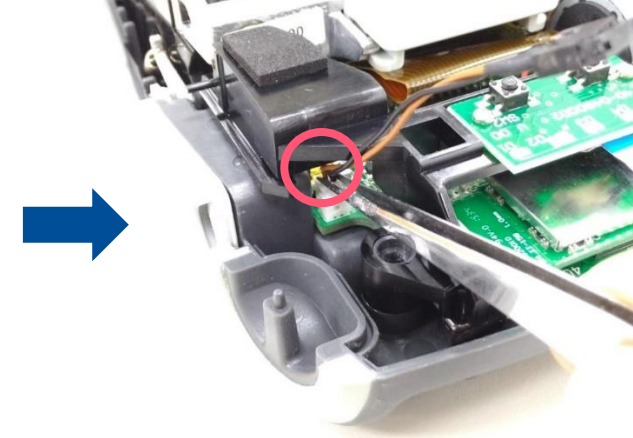
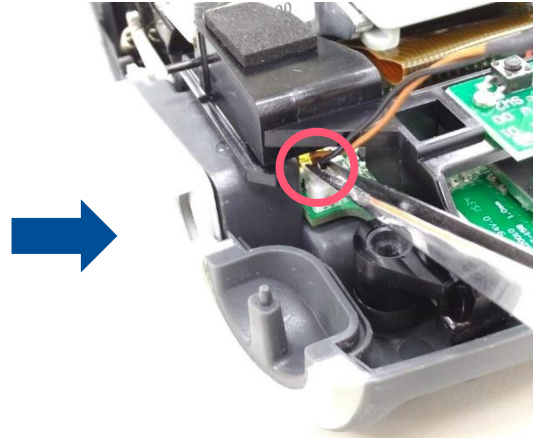
Old media cover



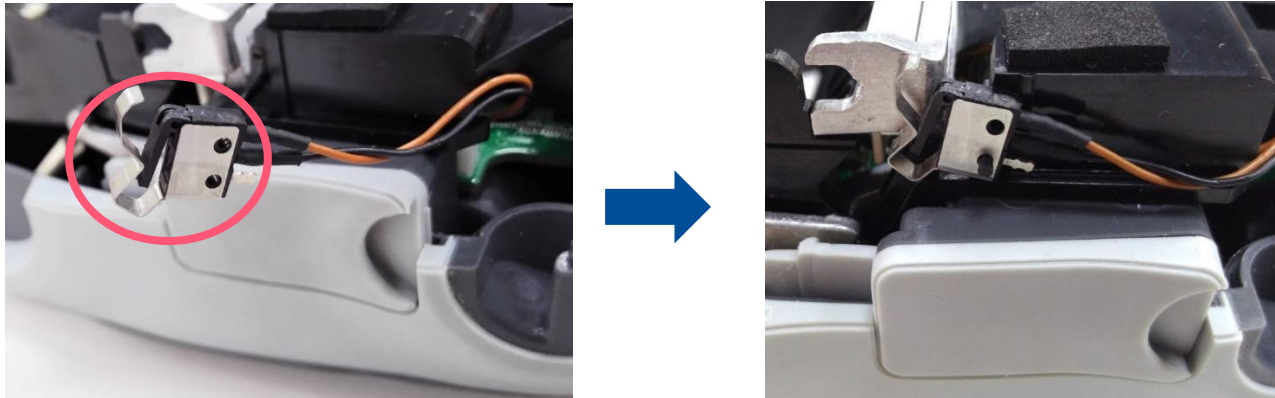
New media cover

(If the media cover is already the new one, it doesn't need to replace the open sensor)

2. Remove the screw on the open sensor.
3. Unplug the old open sensor connector.
4. Then, insert the new open sensor connector.

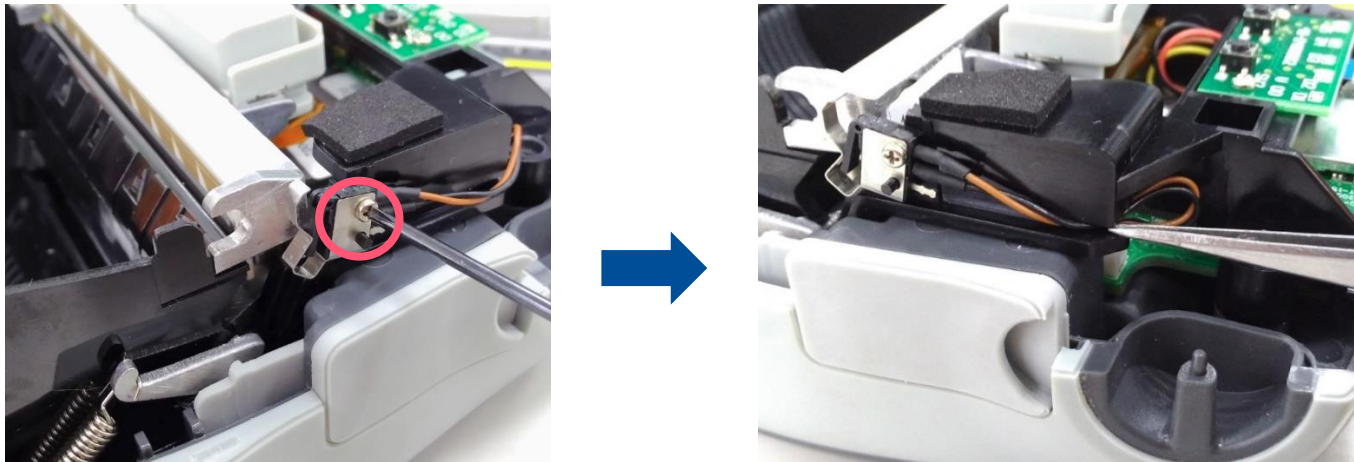


5. Install the elastic panel on the open sensor.
6. Place the open sensor on the side of media cover switch.



Note: the direction of elastic panel must be the same as illustrated

7. Lock the screw on the side of media cover switch.
8. Fix the wire on the slot.



9. Reassemble the parts in the reverse procedures.

4. Troubleshooting

Problem	Possible Cause	Recovery Procedure
Power indicator does not illuminate	<ul style="list-style-type: none"> * The battery is not properly installed. * The battery is dead. 	<ul style="list-style-type: none"> * Reinstall the battery. * Switch the printer on. * Charge the battery.
- The printer status from TSC Console shows " Head Open ".	<ul style="list-style-type: none"> * The printer carriage is open. 	<ul style="list-style-type: none"> * Please close the print carriage.
- The printer status from TSC Console shows " Out of Paper ".	<ul style="list-style-type: none"> * Running out of media roll. * The media is installed incorrectly. * Black mark sensor is not calibrated. 	<ul style="list-style-type: none"> * Supply a new media roll. * Please reinstall the media roll. * Calibrate the black mark sensor.
- The printer status from DiagTool shows " Paper Jam ".	<ul style="list-style-type: none"> * Black mark sensor is not set properly. * Make sure media size is set properly. * Media may be stuck inside the printer mechanism. 	<ul style="list-style-type: none"> * Calibrate the black mark sensor. * Set media size correctly.
Memory full (FLASH / DRAM)	<ul style="list-style-type: none"> * The space of FLASH/DRAM is full. 	<ul style="list-style-type: none"> * Delete unused files in the FLASH/DRAM. * The max. numbers of DRAM is 256 files. * The max. user addressable memory space of DRAM is 256KB. * The max. numbers of file of FLASH is 256 files. * The max. user addressable memory space of FLASH is 2560KB.
Poor Print Quality	<ul style="list-style-type: none"> * Media is loaded incorrectly * Dust or adhesive accumulation on the print head. * Print density is not set properly. * Printhead element is damaged. 	<ul style="list-style-type: none"> * Reload the supply. * Clean the print head. * Clean the platen roller. * Adjust the print density and print speed. * Run printer self-test and check the print head test pattern if there is dot missing in the pattern. * Change proper media roll.

Missing printing on the left or right side of label	* Wrong label size setup.	* Set the correct label size.
Gray line on the blank label	* The print head is dirty. * The platen roller is dirty.	* Clean the print head. * Clean the platen roller.
Irregular printing	* The printer is in Hex Dump mode. * The RS-232 setting is incorrect.	* Turn off and on the printer to skip the dump mode. * Re-set the Rs-232 setting.

5. Maintenance

This session presents the clean tools and methods to maintain the printer.

■ For Cleaning

Depending on the media used, the printer may accumulate residues (media dust, adhesives, etc.) as a by-product of normal printing. To maintain the best printing quality, you should remove these residues by cleaning the printer periodically. Regularly clean the print head and supply sensors once change a new media to keep the printer at the optimized performance and extend printer life.

■ For Disinfecting

Sanitize your printer to protect yourself and others and can help prevent the spread of viruses.

■ Important

- Set the printer power switch to O (Off) prior to performing any cleaning or disinfecting tasks. Leave the power cord connected to keep the printer grounded and to reduce the risk of electrostatic damage.
- Do not wear rings or other metallic objects while cleaning any interior area of the printer.
- Use only the cleaning agents recommended in this document. Use of other agents may damage the printer and void its warranty.
- Do not spray or drip liquid cleaning solutions directly into the printer. Apply the solution on a clean lint-free cloth and then apply the dampened cloth to the printer.
- Do not use canned air in the interior of the printer as it can blow dust and debris onto sensors and other critical components.
- Only use a vacuum cleaner with a nozzle and hose that are conductive and grounded to drain off static build up.
- All reference in these procedures for use of isopropyl alcohol requires that a 99% or greater isopropyl alcohol content be used to reduce the risk of moisture corrosion to the printhead.
- Do not touch printhead by hand. If you touch it carelessly, please use 99% Isopropyl alcohol to clean it.
- Always taking personal precaution when using any cleaning agent.

Cleaning Tools

- Cotton swab
- Lint-free cloth
- Brush with soft non-metallic bristles
- Vacuum cleaner
- 75% Ethanol (for disinfecting)
- 99% Isopropyl alcohol (for printhead and platen roller cleaning)
- Genuine printhead cleaning pen
- Mild detergent (without chlorine)

Cleaning Process:

Printer Part	Method	Interval
Print Head	<ol style="list-style-type: none"> I. Always turn off the printer before cleaning the printhead. II. Allow the printhead to cool for at least one minute. III. Use a cotton swab and 99% Isopropyl Alcohol or genuine print head cleaning pen to clean the print head surface. 	Clean the print head when changing a new label roll.
Platen Roller	<ol style="list-style-type: none"> I. Turn off the printer. II. Rotate the platen roller and wipe it thoroughly with the lint-free 99% Isopropyl Alcohol. 	Clean the platen roller when changing a new label roll
Peel Bar	Use the lint-free cloth with 99% Isopropyl Alcohol to wipe it.	As needed
Sensor	Use brush with soft non-metallic bristles or a vacuum cleaner, to remove paper dust. Clean upper and lower media sensors to ensure reliable Top of Form and Paper Out sensing.	Monthly
Exterior	Clean the exterior surfaces with a clean, lint-free cloth (water-dampened cloth). If necessary, use a mild detergent or desktop cleaning solution then use the 75% Ethanol to wipe it.	As needed
Interior	Clean the interior of the printer by removing any dirt and lint with a vacuum cleaner, as described above, or use a brush with soft non-metallic bristles then use the 75% Ethanol to wipe it.	As needed

Revise History

Date

Content

Editor

TSC **PRINTRONIX®**
AUTO ID